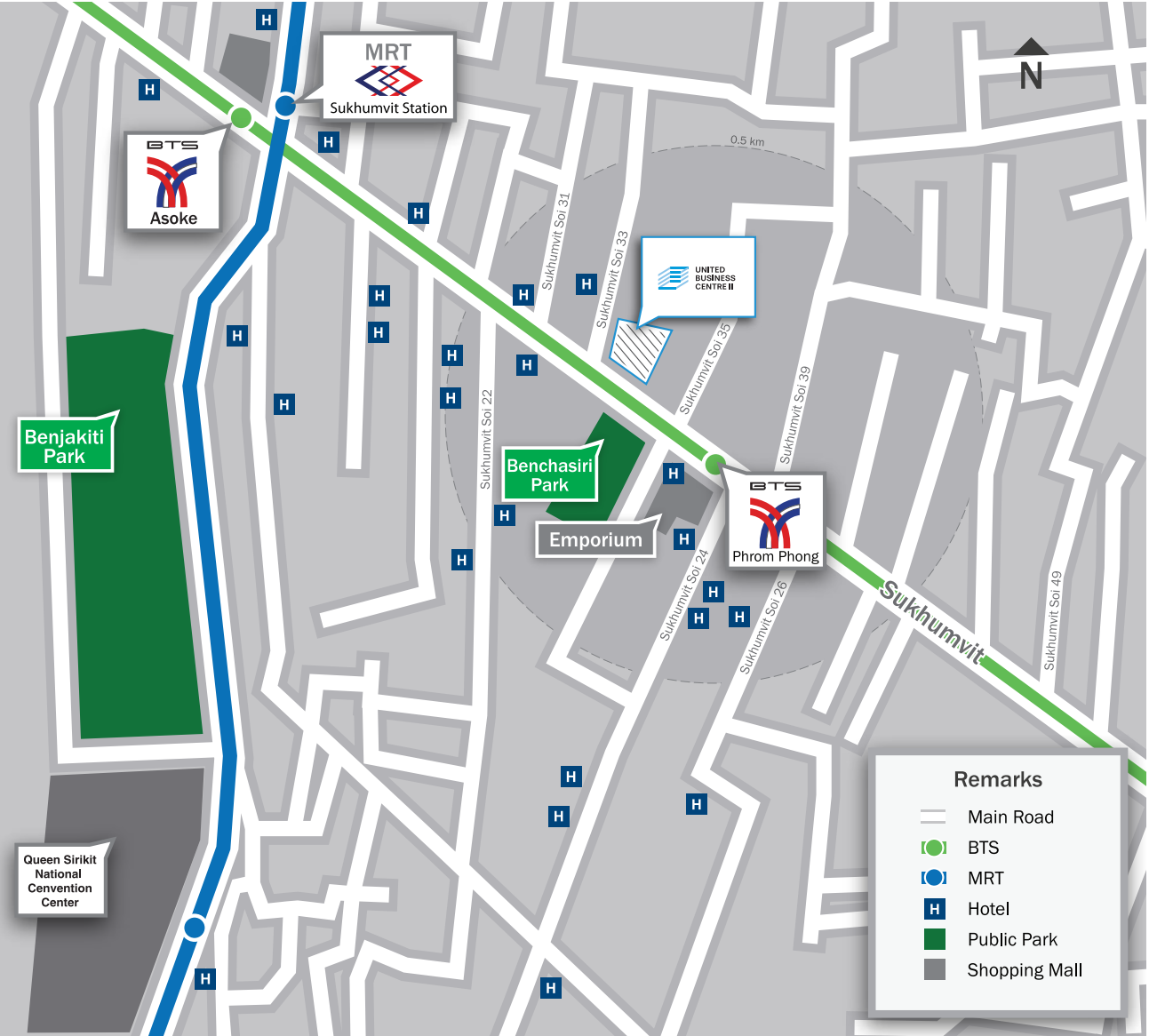


MECHANICAL AND ELECTRICAL SYSTEMS

- Central cooling air condition system using package of water cooled system
- 4 high-zone and 4 low zone office lifts, 2 service lifts and 2 underground car park lifts
- The backup power feeding to run the lighting system in public area, with 48 hours nonstop continual generating

LOCATION



FOR LEASING ENQUIRIES
PLEASE CONTACT 02 261 0261

DEVELOPED AND MANAGED BY
BHIRAJ BURI
www.bhirajburi.co.th



Enjoy Quality Lifestyle Here

www.bhirajburi.co.th



Office Floor



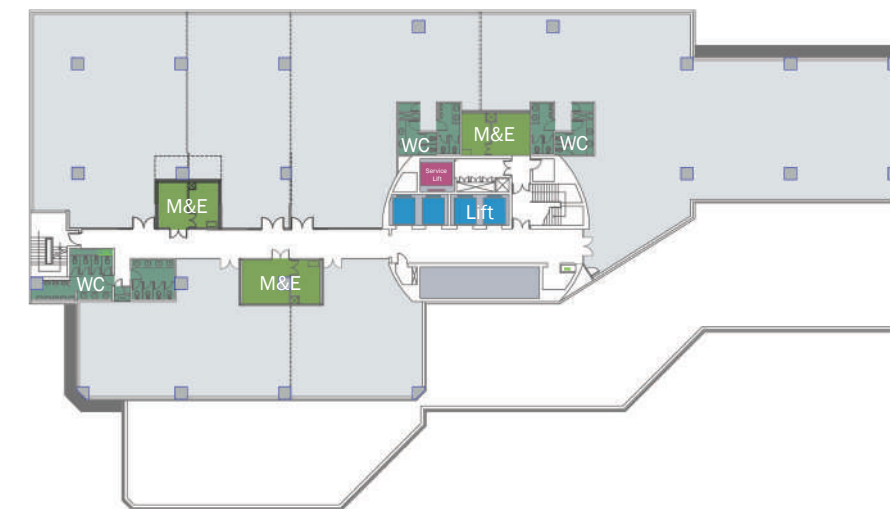
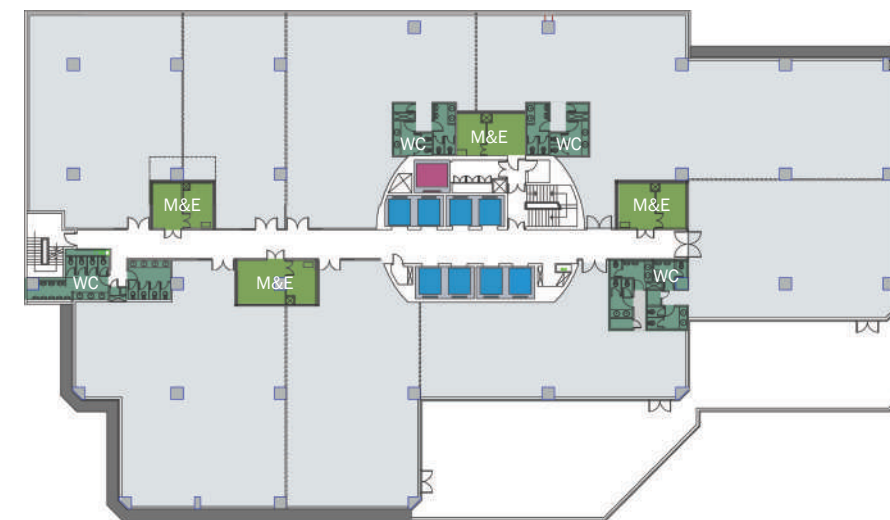
Green Open Space

PROJECT HIGHLIGHTS

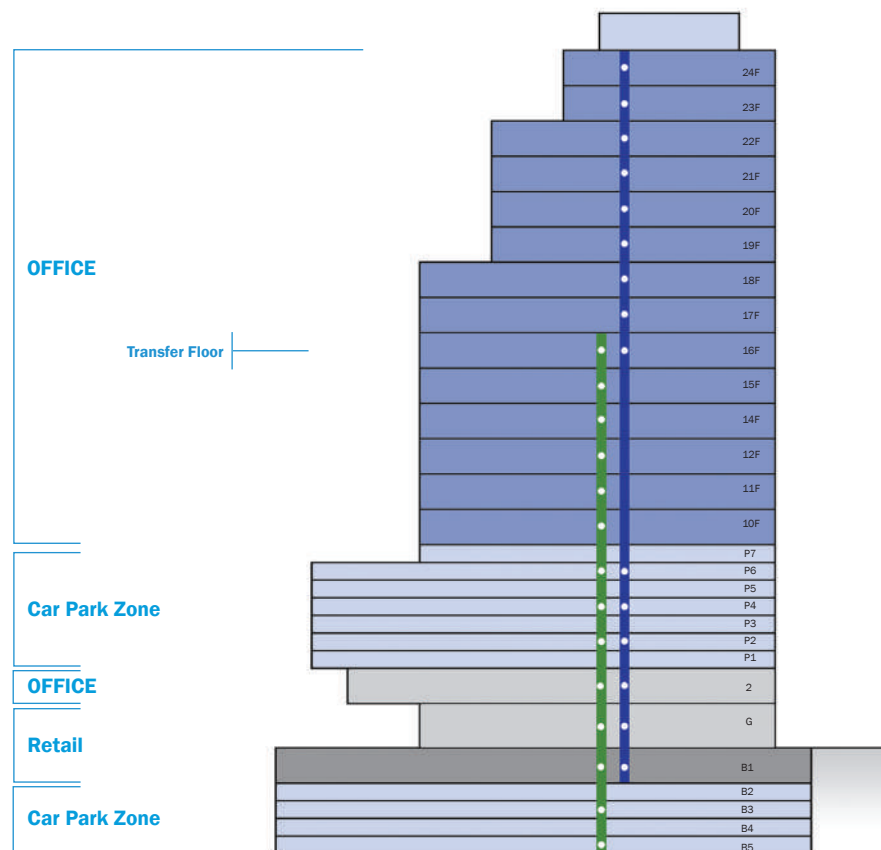
- 32,000 sq.m. grade-B 24-storey office building in Bangkok's CBD
- 200 m. from Phrom Phong BTS station
- Spectacular views of Benjasiri Park and the city skyline
- Retail facilities on B1 floor
- Private balcony on 15/19/21/23 floor
- Engineered flood protection system that can withstand 2.6 m. of flood wall above mean sea level

OFFICE SPECIFICATION

- Lobby with ceiling height of 5 m.
- Floor plate could accommodate subdivided to office renting from 60-2,265 sq.m./floor
- Ceiling Height of 2.5 m.
- 24 hours security system with CCTV and security guard
- Thermoscan system and access card control



- Restroom , WC , Toilet
- Rental Area
- Serviced Lift
- Lift



- High Zone Lift
- Low Zone Lift



Ample Parking Space



Access card control